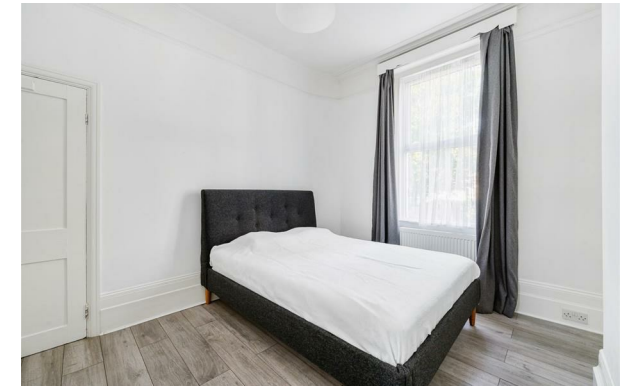


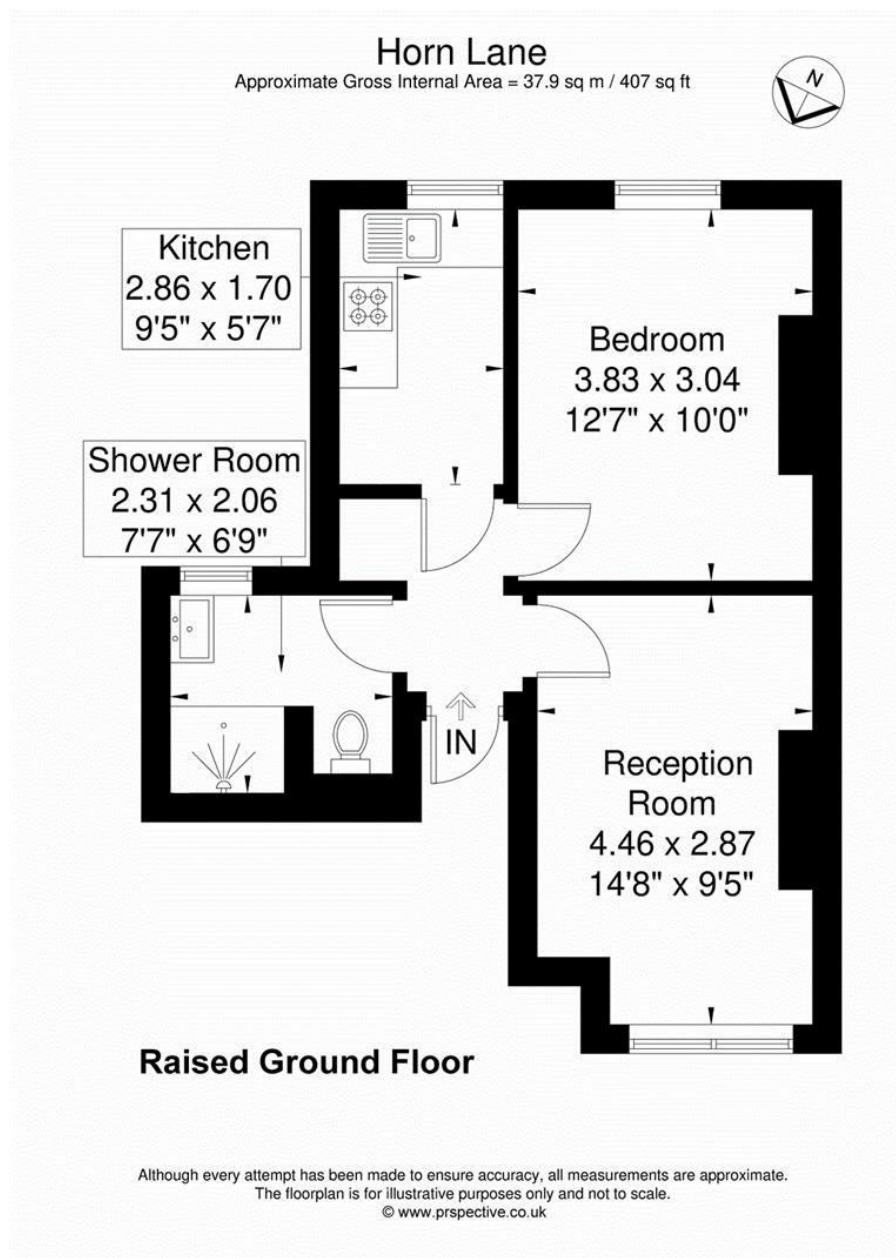
# Rolfe East



## Horn Lane, W3

Offers In Excess Of £300,000

- Share of Freehold
- One Double Bedroom Flat
- Set in a Period Building
- Raised Ground Floor
- Close to Elizabeth Line



## Viewings

Viewings by arrangement only.  
Call 020 8993 7755 to make an appointment.

## Council Tax Band

B